



NatureMapr

A new sighting is uploaded to **NatureMapr.org**, "Australia's citizen science platform", and 'suggested' to be an **INSECT**.

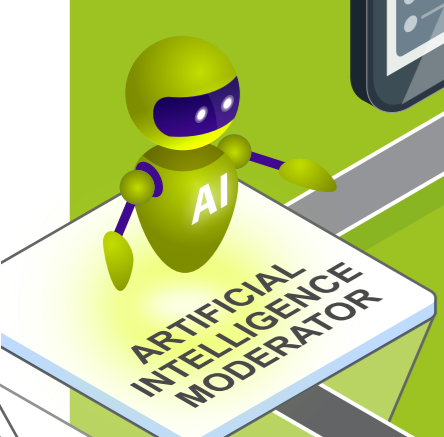


**Carbon AI** suggests an ID (if probability > 60% in a trained category with ≥ 100 images), fast-tracking the workflow and saving moderator time.

Relevant **expert moderators** are invited to curate the sighting.

**Category Moderators** are qualified experts, trusted by existing moderators, with formal qualifications, professional experience or a demonstrated track record in a specific species category.

**Location Moderators** are local experts, trusted by existing moderators, with firsthand knowledge of their area, alert to the typical species and activity within it.



**Insect Experts** trust and enlist **Moth Experts**.



**Moth Experts** trust and enlist **Sun Moth Experts**.



**Carbon AI** confirms an ID (if probability > 99% in a trained category with ≥ 100 images and > 50% of category species trained).

The sighting may be identified by **Carbon AI** or a relevant **Location** or **Category Moderator**.

After successful identification, **Carbon AI** undergoes further training.

Record curated and identification confirmed



KEY:



Category Moderator



Location Moderator